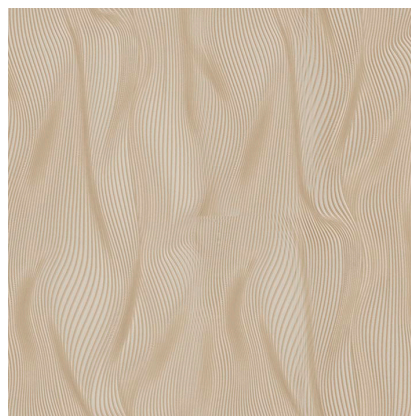


Model: SKINS EMPYREAL SERPENTINE BRONZE

Codes: 100332368

Group: G-203









Format: 70X1000CM



CERTIFICATIONS

Certifications	FSC
Certifications	type II (ASTM F793/F793M-15)

FEATURES

-  Independent (non-governmental) certificate that guarantees consumers that forest products come from rationally exploited forests
-  Roll format
-  The adhesive must be applied on the support to be decorated (gluing the wall)
-  The rolls should be installed so that the pattern at end of the roll matches the pattern at the beginning of the next roll, creating a mirror effect
-  Allows for dry removal
-  The duration of the warranty is that provided by the European Standard Warranty.
-  Excellent color fastness to light.
-  It can be cleaned with a sponge or soft brush.

ADDITIONAL NOTES

We recommend purchasing all the wallpaper you will need in the same order and production shade, since there will be slight changes in shade between the different dyes/lots.

DIMENSIONAL FEATURES

Width	70 CM
Length	1000 CM

LABORATORY TESTS

Flammability	B-s1,d0	EN 13501*
Flammability	CLASS A	ASTM E84*
Formaldehyde emissions	<120 mg/kg	UNE-EN 15102:2007+A1:2011*
Migration of heavy metals and specific elements	PASS	UNE EN 15102:2019*
Vinyl chloride monomer release	PASS	UNE-EN 15102:2007+A1:2011*
Content of specific hazardous substances	PASS	UNE-EN 15102:2019*
Perfluorooctane sulfonic acid (pfos) and its by-products	PASS	UNE-EN 15102:2019*
Weight	420 G/M2	EN ISO 536*
Dry tensile md	PASS	ASTM F793/F793M-15*
Dry tensile cd	PASS	ASTM F793/F793M-15*
Elongation md	PASS	ASTM F793/F793M-15*
Elongation cd	PASS	ASTM F793/F793M-15*



PACKING

Sales units per box	42 M2/BOX	
Sales units per pallet	504 M2/PAL	
Sales units per unit	7 M2/PIECE	
Net weight	0.421429 KG/M2	
Sale unit	M2	
Base unit	ST	
Gross weight	0.457143 KG/M2	

